

# *da Vinci*<sup>®</sup> PROSTATECTOMY



Solutions for minimally invasive urologic surgery

# The *da Vinci*<sup>®</sup> Surgical System

- › High definition 3D vision
- › *EndoWrist*<sup>®</sup> instrumentation
- › *Intuitive*<sup>®</sup> motion

## *da Vinci*<sup>®</sup> PROSTATECTOMY | Potentially the most effective, least invasive surgical approach to prostate cancer treatment available today

Compared to an open or conventional laparoscopic approach, *da Vinci* Prostatectomy can further enable:

- ❖ Superior visualization of tissue planes, target anatomy, and the neurovascular bundles
- ❖ Meticulous dissection of the prostate and surrounding structures
- ❖ Precise suturing of the DVC and urethrovesical anastomosis
- ❖ Traction and counter-traction of the prostate, bladder, and adjacent anatomy





### POTENTIAL PATIENT BENEFITS INCLUDE

- ❖ Significantly less pain
- ❖ Less blood loss
- ❖ Fewer transfusions
- ❖ Less risk of wound infection
- ❖ Less scarring
- ❖ Shorter hospital stay
- ❖ Shorter recovery time
- ❖ In many cases, better clinical outcomes than conventional technologies allow — for example, better cancer control and a lower incidence of impotence and incontinence<sup>1</sup>









<sup>1</sup> Cancer control is defined in part by margin rates and PSA test scores. The following studies provide support for these claims: Ahlering TE, Woo D, Eichel L, Lee DJ, Edwards R, Skarecky DW. Robot-assisted versus open radical prostatectomy: a comparison of one surgeon's outcomes. *Urology*. 2004 May;63(5):819-22. Menon M, Tewari A, Peabody JO, Shrivastava A, Kaul S, Bhandari A, Hemal AK. Vattikuti Institute prostatectomy, a technique of robotic radical prostatectomy for management of localized carcinoma of the prostate: experience of over 1100 cases. *Urol Clin North Am*. 2004 Nov;31(4):701-17. Tewari A, Srivasatava A, Menon M; Members of the VIP Team. A prospective comparison of radical retropubic and robot-assisted prostatectomy: experience in one institution. *BJU Int*. 2003.

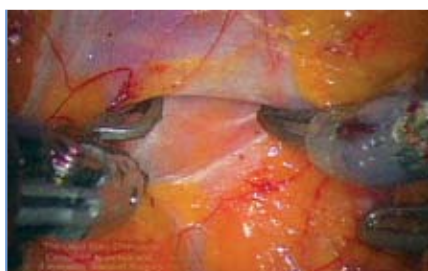
# EndoWrist® Instruments Optimized for *da Vinci*® Prostatectomy

STANDARD/S PNs	TARGETED APPLICATION	FEATURE	POTENTIAL BENEFITS
 <b>Large Needle Driver</b> 400006/420006	<ul style="list-style-type: none"> <li>✘ Ligation of the dorsal vein complex (DVC) and creation of the urethrovesical anastomosis</li> </ul>	<ul style="list-style-type: none"> <li>✘ Carbide-insert style jaws</li> <li>✘ Diamond pattern jaw profile</li> </ul>	<ul style="list-style-type: none"> <li>✘ Delivers secure needle control</li> <li>✘ Provides firm grip and handling of multiple needle sizes</li> </ul>
 <b>Hot Shears™ (Monopolar Curved Scissors)</b> 400179/420179 Requires Tip Cover: 400180	<ul style="list-style-type: none"> <li>✘ Cutting, dissecting, and coagulation of tissues and pedicles</li> </ul>	<ul style="list-style-type: none"> <li>✘ Combined scissors and monopolar cautery</li> <li>✘ Tapered tip-profile</li> </ul>	<ul style="list-style-type: none"> <li>✘ Precise, clean tissue cutting</li> <li>✘ Precise, localized hemostasis</li> <li>✘ Blunt tissue dissection</li> <li>✘ Fewer instrument exchanges</li> </ul>
 <b>Maryland Bipolar Forceps – Fenestrated</b> 400172/420172	<ul style="list-style-type: none"> <li>✘ Grasping, dissection, and coagulation of tissues and pedicles</li> </ul>	<ul style="list-style-type: none"> <li>✘ Bipolar energy</li> <li>✘ Curved, tapered jaws</li> <li>✘ Fenestration at jaw base</li> </ul>	<ul style="list-style-type: none"> <li>✘ Delivers localized coagulation with minimal thermal spread</li> <li>✘ Facilitates blunt tissue dissection</li> <li>✘ Improves tissue grasping by allowing large overall tissue purchase</li> </ul>
 <b>Cobra Grasper</b> 400190/420190	<ul style="list-style-type: none"> <li>✘ Grasping and retracting the prostate</li> </ul>	<ul style="list-style-type: none"> <li>✘ 4 x 2 interlocking teeth</li> <li>✘ Wide 60° jaw-opening angle</li> </ul>	<ul style="list-style-type: none"> <li>✘ Delivers firm, secure grasping of dense tissue structures</li> <li>✘ Enables greater tissue purchase</li> <li>✘ Open-jaw retraction provides excellent exposure of the surgical site</li> </ul>

## Additional *EndoWrist* Instrument Options

 <b>EndoWrist PK™ Dissector</b> 400214/420214	<ul style="list-style-type: none"> <li>✘ Grasping, dissection, and coagulation of tissues and pedicles</li> </ul>	 <b>SutureCut™ Needle Driver</b> 400209/420209	<ul style="list-style-type: none"> <li>✘ Ligation of the dorsal vein complex (DVC) and creation of the urethrovesical anastomosis</li> </ul>
 <b>Round Tip Scissors</b> 400007/420007	<ul style="list-style-type: none"> <li>✘ Cutting and dissecting of tissues and pedicles</li> </ul>	 <b>Permanent Cautery Hook</b> 400183/420183	<ul style="list-style-type: none"> <li>✘ Coagulating tissues and pedicles</li> </ul>
 <b>Curved Scissors</b> 400178/420178	<ul style="list-style-type: none"> <li>✘ Cutting and dissecting of tissues and pedicles</li> </ul>	 <b>ProGrasp</b> 400093/420093	<ul style="list-style-type: none"> <li>✘ Grasping and retracting the prostate</li> </ul>

# Procedure Highlights



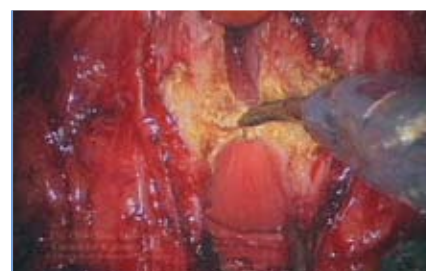
## Opening of Endopelvic Fascia

Tissue planes surrounding the endopelvic fascia are easily identified, delineated, and exposed using the *da Vinci* System's 3D HD vision system and the fully articulating *EndoWrist* Instruments.



## Ligation of the Dorsal Vein Complex (DVC)

Locating the correct anatomical angles while suture-ligating the DVC can be precisely carried out with the aid of the *EndoWrist* Needle Drivers and the steerable *da Vinci* 3D HD endoscopic camera.



## Bladder Neck Dissection

The increased retraction and control provided by the *da Vinci* System's third instrument arm provides for efficient exposure of the posterior urethra to aid in the transection of the bladder neck.



## Nerve-Sparing Techniques

A meticulous cautery-free nerve-sparing dissection can be carefully performed while hugging the capsule of the prostate and accessing the unique anatomic angles exposed by the cold *EndoWrist* Curved Scissors.



## Apical Dissection

The prostatic apex can be readily identified and transected while preserving urethral length with the assistance of the *da Vinci* 3D HD vision system and *EndoWrist* Curved Scissors.



## Urethrovesical Anastomosis

Increased dexterity provided by using the *EndoWrist* Needle Drivers combined with the *da Vinci* System allows for precise needle placement and suturing required to perform a watertight urethrovesical anastomosis.



# INTUITIVE SURGICAL®

Taking Surgery Beyond the Limits of the Human Hand.™

#### **Worldwide Headquarters**

1266 Kifer Road, Building 101  
Sunnyvale CA 94086-5304  
**Tel:** +1.408.523.2100  
**Fax:** +1.408.523.1390

#### **European Office**

**Toll Free:** +00800.46.88.78.74  
**Tel:** +41.21.821.20.20  
[www.IntuitiveSurgical.com](http://www.IntuitiveSurgical.com)  
[www.daVinciSurgery.com](http://www.daVinciSurgery.com)

To contact a representative or receive additional information,  
please call Intuitive Surgical Customer Service at 1-888-409-4774.

While clinical studies support the use of the *da Vinci* Surgical System as an effective tool for minimally invasive surgery, individual results may vary. Before performing any clinical procedure utilizing the System, physicians are responsible for receiving sufficient training and proctoring to ensure that they have the requisite training, skill, and experience necessary to protect the health and safety of the patient. For technical information, including full cautions and warnings on using the *da Vinci* System, please refer to the System User Manual. Read all instructions carefully. Failure to properly follow instructions, notes, cautions, warnings, and danger messages associated with this equipment may lead to serious injury or complications for the patient. © 2007 Intuitive Surgical. All rights reserved. *Intuitive*, *Intuitive Surgical*, *da Vinci*, *da Vinci S HD*, *InSite*, *TilePro* and *EndoWrist* are trademarks or registered trademarks of Intuitive Surgical. All other product names are trademarks or registered trademarks of their respective holders. PN 871553 Rev. B 4/07